

Keys

Schlüssel




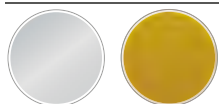
Wafer Keys

Schlüssel für Plättchenzylinder



Key Series Profil de clé	Product Brand Produkt- marke	Combinations Schließungen	Number of wafers Anzahl Zuhaltungen	Mastered Schließ- anlagen- fähig	Soft Overmoulded Umspritzt, weich	Hard Overmoulded Umspritzt, hart	Hinged Klapp- schlüssel	Steel Key Stahl- schlüssel	Brass Key Mes- sing- schlüs- sel	Nickel Key Neusil- ber- schlüs- sel	Key Profile Schlüssel- profil
2	RONIS	200	4	-	✓	✓	-	✓	-	-	
5	RONIS	200	4	-	✓	✓	-	✓	-	-	
10	RONIS	60	4	-	✓	✓	-	✓	-	-	
11	RONIS	500	5	-	✓	✓	-	✓	-	-	
15	RONIS	500	5	-	✓	✓	-	✓	-	-	
16	RONIS	500	5	✓	✓	✓	-	✓	-	-	
26	RONIS	50	5	-	✓	✓	-	✓	-	-	
31	RONIS	200	5	-	✓	✓	-	✓	-	-	
32	RONIS	200	5	✓	✓	✓	-	✓	-	-	
44	RONIS	200	5	-	-	-	-	✓	-	-	
92	RONIS	200	5	-	-	-	-	✓	-	-	
1D	DOM	114	4	-	-	-	-	✓	-	-	
1H	DOM	4088	10	✓	-	-	-	✓	-	-	
2D	DOM	204	5	-	-	-	-	✓	-	-	
2H	DOM	2088	10	✓	-	-	-	✓	-	-	
3M	RONIS	3000	9	✓	-	-	-	✓	✓	-	

 **Key profile view from the end of the key**
Ansicht vom Schlüsselprofil von Schlüsselspitze



Steel
Stahl

Brass
Messing



Soft Overmoulded
Umspritzt, weich



Hard Overmoulded
Umspritzt, hart



Standard
Standard



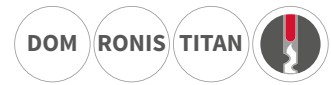
Key Series Schlüsselserie	Product Brand Produktmarke	Combinations Schließungen	Number of wafers Anzahl Zuhaltungen	Mastered Schließ- anlagen- fähig	Soft Overmoulded Umspritzt, weich	Hard Overmoulded Umspritzt, hart	Hinged Klapp- schlüssel	Steel Key Stahl- schlüssel	Brass Key Mes- sing- schlüs- sel	Nickel Key Neusil- ber- schlüssel	Key Profile Schlüssel- profil
4R	RONIS	8000	8	✓	✓	✓	✓	✓	-	-	
CC	RONIS	2000	8	✓	✓	✓	✓	✓	-	-	
AJ	RONIS	700	9	✓	-	-	-	✓	-	-	
FH	RONIS	200	5	-	✓	✓	✓	✓	-	-	
FH-3	RONIS	27	3	-	✓	✓	-	✓	-	-	
FM	RONIS	200	5	✓	✓	✓	✓	✓	-	-	
KM	RONIS	1000	6	✓	✓	✓	✓	✓	-	-	
KT	RONIS	1000	7	✓	✓	✓	✓	✓	-	-	
LF	RONIS	200	5	-	✓	✓	-	✓	-	-	
R	RONIS	200	5	-	✓	✓	✓	✓	-	-	
SH	RONIS	200	5	-	✓	✓	✓	✓	-	-	
SM	RONIS	200	5	✓	✓	✓	✓	✓	-	-	
TK	RONIS	1000	7	✓	✓	-	✓	✓	-	-	
T12	TITAN	754	4	-	-	-	-	✓	-	-	

Key profile view from the end of the key
Ansicht vom Schlüsselprofil von Schlüsselspitze



Pin conventional Keys

Schlüssel für konventionelle Stiftzylinder



Key Series Schlüsselserie	Product Brand Produktmarke	Combinations Schließungen	Number of wafers Anzahl Zuhaltungen	Mastered Schließ- anlagen- fähig	Soft Overmoulded Umspritzt, weich	Hard Overmoulded Umspritzt, hart	Hinged Klapp- schlüssel	Steel Key Stahl- schlüssel	Brass Key Mes- sing- schlüs- sel	Nickel Key Neusil- ber- schlüssel	Key Profile Schlüssel- profil
2P	RONIS	7500	5	-	-	-	-	✓	✓	-	
5P	RONIS	7500	5	-	-	-	-	✓	✓	-	
6	RONIS	30000	6	✓	-	-	-	✓	✓	-	
22	DOM	1500	5	✓	-	-	-	-	-	✓	
201	RONIS	16500	5	✓	-	-	-	✓	✓	-	
301	RONIS	16500	5	✓	-	-	-	✓	✓	-	
501	RONIS	16500	5	✓	-	-	-	✓	✓	-	
601	RONIS	16500	5	✓	-	-	-	✓	✓	-	
3A	DOM	68	3	-	-	-	-	✓	-	-	
2C	DOM	2600	5	-	-	-	-	✓	-	-	
4A	DOM	482	4	-	-	-	-	✓	-	-	
5A	DOM	1300	5	-	-	-	-	✓	-	-	
CL	DOM	250	5	-	-	-	-	✓	-	-	
RS8	DOM	100000	8	✓	-	-	-	-	-	✓	
SIG	DOM	100000	5	✓	-	-	-	-	-	✓	
K58A	TITAN	27491	5	✓	-	-	-	-	-	-	
T10	TITAN	4877	5	-	-	-	-	✓	-	-	



Key profile view from the end of the key
Ansicht vom Schlüsselprofil von Schlüsselspitze



Steel
Stahl



Brass
Messing



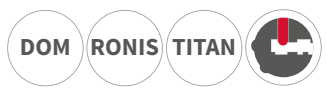
Nickel
Nickel



Standard
Standard

Pin reversible Keys

Wendeschlüssel



Key Series Schlüsselserie	Product Brand Produktmarke	Combinations Schließungen	Number of wafers Anzahl Zuhaltungen	Mastered Schließ- anlagen- fähig	Soft Overmoulded Umspritzt, weich	Hard Overmoulded Umspritzt, hart	Hinged Klapp- schlüssel	Steel Key Stahl- schlüssel	Brass Key Mes- sing- schlüs- sel	Nickel Key Neusil- ber- schlüssel	Key Profile Schlüssel- profil
2Y	DOM	100000	6	✓	-	-	-	-	-	✓	
DH	DOM	100000	6	✓	-	-	-	-	-	✓	
6SR	DOM	100000	5	✓	-	-	-	-	-	✓	
HT	DOM	100000	5	✓	-	-	-	-	-	✓	
SAT	DOM	100000	9	✓	-	-	-	-	-	✓	
NU	DOM	100000	6	✓	-	-	-	-	-	✓	
PE	DOM	100000	5	✓	-	-	-	-	-	✓	
PG	DOM	100000	5	✓	-	-	-	-	-	✓	
PR	DOM	300000	5	✓	-	-	-	-	-	✓	
PT	DOM	500000	6	✓	-	-	-	-	-	✓	
RT	RONIS	2000	6	✓	-	-	-	✓	✓	-	
RK	RONIS	∞	6	✓	✓	✓	-	-	-	-	

Key profile view from the end of the key
Ansicht vom Schlüsselprofil von Schlüsselspitze



Disc Keys

Schlüssel für Scheibenzylinder



Key Series Schlüsselserie	Product Brand Produktmarke	Combinations Schließungen	Number of wafers Anzahl Zuhaltungen	Mastered Schließ- anlagen- fähig	Soft Overmoulded Umspritzt, weich	Hard Overmoulded Umspritzt, hart	Hinged Klapp- schlüssel	Steel Key Stahl- schlüssel	Brass Key Mes- sing- schlüs- sel	Nickel Key Neusil- ber- schlüssel	Key Profile Schlüssel- profil
123	DOM	5000	8	✓	-	-	-	✓	-	-	
SB	DOM	100000	8	-	-	-	-	✓	-	-	

Insert Keys

Einsteck-Schlüssel



Key Series Schlüsselserie	Product Brand Produktmarke	Zamak Key Zamak- Schlüssel	Key Profile Schlüssel- profil
C1	RONIS	✓	
C2	RONIS	✓	
H6	RONIS	✓	
SDS	RONIS	✓	
S6F	RONIS	✓	
S6M	RONIS	✓	
S8M	RONIS	✓	



Key profile view from the end of the key
Ansicht vom Schlüsselprofil von Schlüsselspitze



Steel
Stahl



ZM-Zamak
ZM - Zamak



Standard
Standard